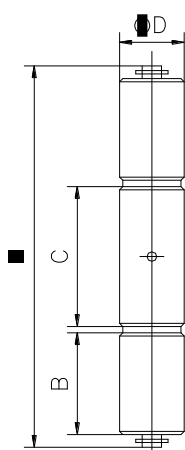




Панта Estebro® за заваряване кръгла трисекционна 20x120 мм, 511



| Cod | Dimens. | A | B | C | ØD |  |  |
|-----|---------|-----|----|----|----|---|---|
| 50 | 16x100 | 100 | 27 | 35 | 16 | 30 | 4,30 |
| 51 | 20x120 | 118 | 32 | 42 | 20 | 20 | 5,35 |
| 52 | 25x150 | 150 | 40 | 56 | 25 | 12 | 6,40 |
| 390 | 30x175 | 175 | 55 | 55 | 30 | 12 | 11,40 |
| 391 | 35x175 | 175 | 55 | 55 | 35 | 6 | 7,80 |

Family: Three section hinge

Material: 11SMn30 steel

Maximum weight supported: According to study

Description: Mechanized component which is installed on a metallic overhead door allowing its opening and closing. It must be welded on door's the folding line. It has two brass washers in order to avoid the friction between both bodies and can be replaced in the case of erosion. All hinges from Ø20 mm on come with grease hole.

Продукт: [Панта Estebro® за заваряване кръгла трисекционна 20x120 мм, 511](#)

Категория: [Панти за заваряване](#)

Бранд: [Estebro®](#)

Категория бранд: [Панта Estebro®](#)